

**Features**

- ✧ Electronically addressed. The address can be modified in field.
- ✧ Built-in microprocessor processes messages intelligently.
- ✧ Insulation technology for input signal, good anti-interference ability.
- ✧ Cable checking.
- ✧ Plug-in structure.

**Description**

With a microprocessor, I-9301 Addressable Single I/O Module can communicate with fire alarm control panel (FACP), check power cut, control output and LED.

The module closes the output relay and illuminates the LED when receiving start command from fire alarm control panel.

**Connection and Wiring**

Terminals on the module are shown as Fig. 1.

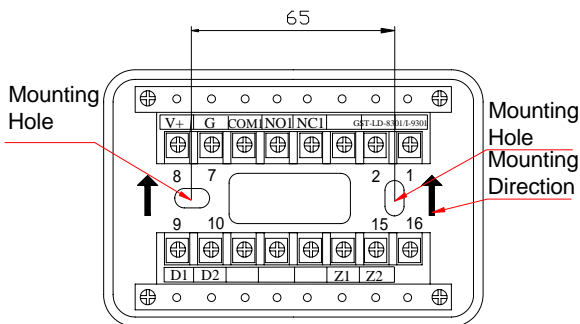


Fig. 1

Z1,Z2:Connecting with loop of FACP, polarity-insensitive.

D1, D2: Polarity-insensitive 24VDC power line.

V+,G:24VDC output terminals, supplying output contact with +24V output signal . There is 24V output at V+ and G no matter whether the module is started or not.

NC1, COM1, NO1: Normally closed or normally open output terminals.

**Recommended Wiring**

1.5mm<sup>2</sup> or above fire cable for 24VDC power line, 1.0mm<sup>2</sup> or above fire cable for other terminals, subject to local codes.

**Installation**

The module is simply plugged onto the base after corresponding terminals are connected.

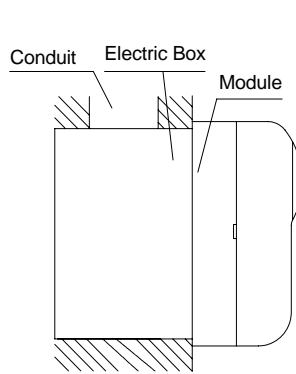


Fig. 2

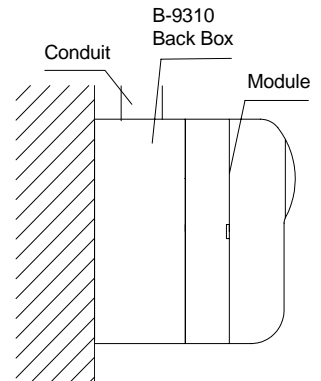


Fig. 3

If the cable conduit is inside the wall, the base is installed onto the electric box (Fig. 2). If the cable conduit is on the surface of the wall, the B-9310 Back Box is available.

Note the upward arrow for mounting direction (Fig.1).

**Application**

The module is designed to connect with the devices controlled by fire alarm control panel, including smoke exhauster, fan blower, and fire valve.

Address can be set through P-9910B programmer in field, refer to P-9910B Hand Held Programmer Installation and Operation Manual for specific operation.

Mode of checking feedback signal can be set through P-9910B programmer. After unlocking the programmer, press *Function* and then number "4", input "13" or "40". "13" means checking the feedback signal at any time, "40" means checking feedback signal only in started state. Press *Program*, if *P* appears on the screen, the setting is successful.

- ✧ The module can directly drive a smoke exhauster or fire valve (electrical tripping device). System composition is shown in Fig. 4.

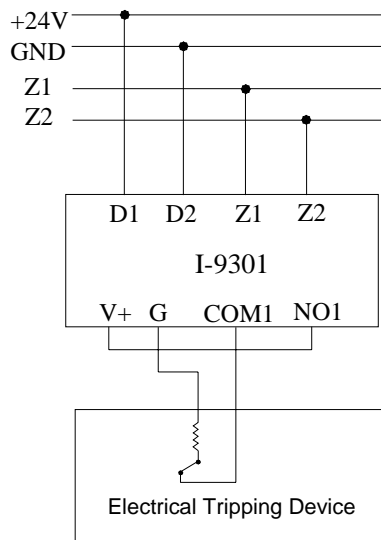


Fig. 4

◇ System composition for volt-free output contact controlling field device is shown in Fig. 5.

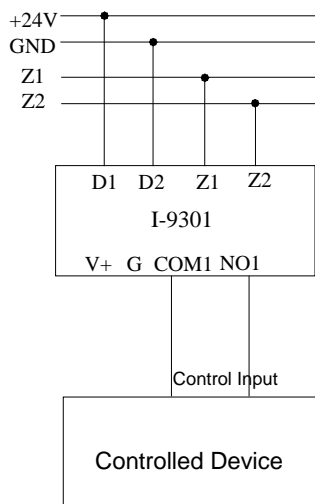


Fig. 5

**Note:**

**Don't connect the module's contact to the AC control loop directly, preventing the strong AC interference signal from damaging the module or controlled device.**

**The module is not used for gas extinguishing devices.**

**Specification**

Operating Voltage	Loop: 24V Power: 24VDC
Quiescent Current	Loop 1mA Power 2mA
Action Current	Loop 3mA Power 15mA
Output Capacity	Output contact capacity is 24VDC/5A Voltage output capacity is 24VDC/1A
Output Control Mode	Relay normally open/normally closed volt-free output
Addressing	Electronically addressed
Addressing Range	Occupying one address, selectable within 1 ~ 242.
LED	Red, flashes when polling, illuminates in action.
Ingress Protection Rating	IP30
Operating Temperature	0 ~ +49
Relative Humidity	93%, non condensing
Material and Color of Enclosure	ABS, White (RAL 9010)
Dimension (L x W x H)	120mm x 80mm x 39mm
Weight	About 194g (with base)

**Accessories and Tools**

Model	Name	Remark
P-9910B	Hand Held Programmer	Supplied separately
B-9310	Back Box	Supplied separately

**Limited Warranty**

**GST** warrants that the product will be free from defects in design, materials and workmanship during the warranty period. This warranty shall not apply to any product that is found to have been improperly installed or used in any way not in accordance with the instructions supplied with the product. Anybody, including the agents, distributors or employees, is not in the position to amend the contents of this warranty. Please contact your local distributor for products not covered by this warranty.

This document is subject to change without notice. Please contact GST for more information or questions.

**GST China**  
**Gulf Security Technology Co., Ltd.**  
 No. 80, Changjiang East Road,  
 QETDZ, Qinhuangdao, Hebei,  
 P. R. China 066004  
 Tel: +86 (0) 335 8502528  
 Fax: +86 (0) 335 8508942  
[sales@gst.com.cn](mailto:sales@gst.com.cn)  
[www.gst.com.cn](http://www.gst.com.cn)

**GST UK**  
**Global System Technology PLC**  
 Lion Court, Staunton Harold Hall,  
 Melbourne Road, Ashby de la Zouch,  
 Leicestershire, England LE65 1RT  
 Tel: +44 1283 225 478  
 Fax: +44 1283 220 690  
[info@gst.uk.com](mailto:info@gst.uk.com)  
[www.gst.uk.com](http://www.gst.uk.com)

**GST Dubai**  
**Global System Technology PLC**  
 PO Box 17998 Unit ZA04  
 JEBEL ALI Free Zone,  
 Dubai, UAE  
 Tel: +971 (0) 4 8833050  
 Fax: +971 (0) 4 8833053  
[info@gst.uk.com](mailto:info@gst.uk.com)  
[www.gst.uk.com](http://www.gst.uk.com)